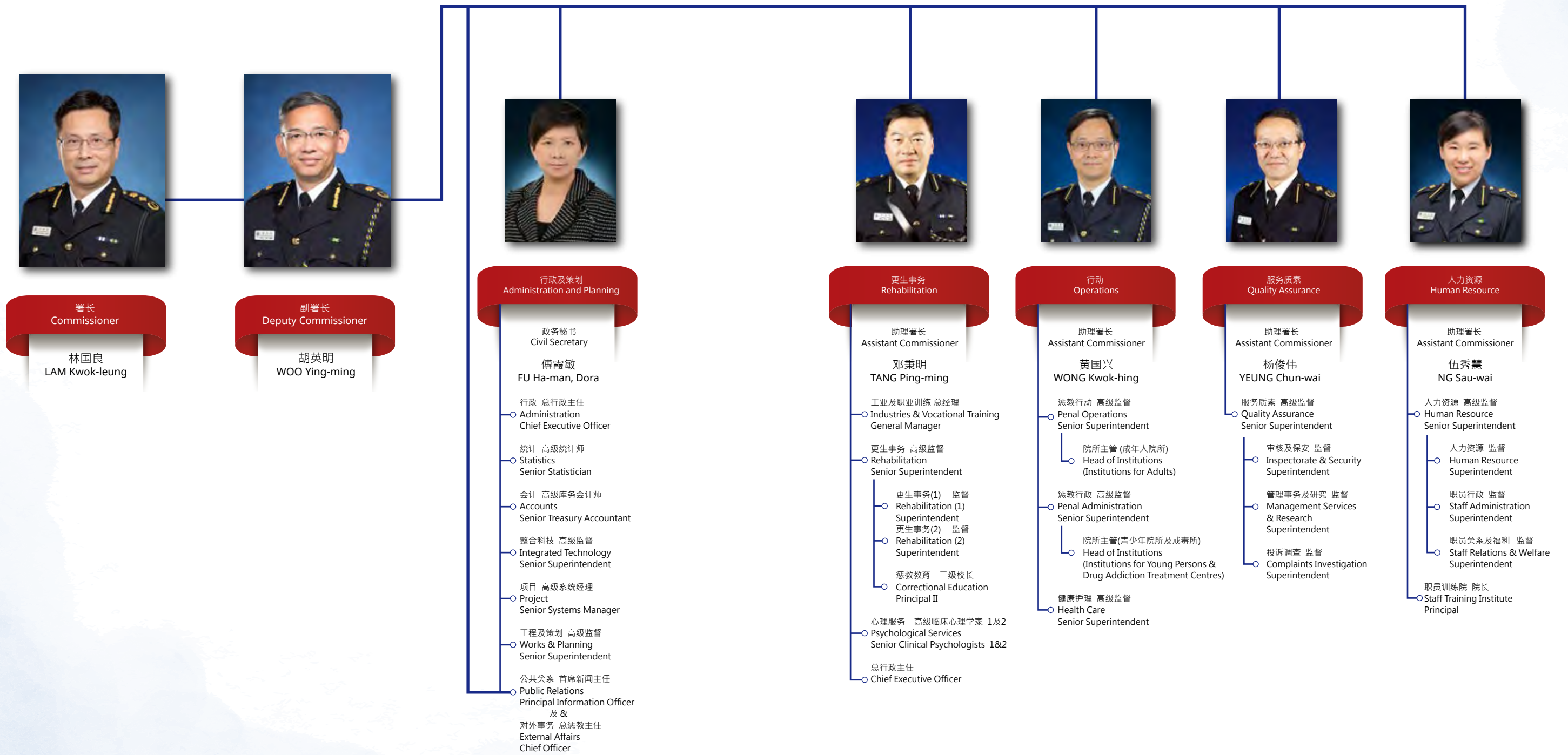


附录 Appendices

(2017年12月31日)
(as at 31.12.2017)

惩教署总部组织图

Organisation chart of Correctional Services Department Headquarters



Locations of Correctional Services Department Headquarters, Staff Training Institute and Correctional Facilities

(2017年12月31日)
(as at 31.12.2017)



- | | |
|---|--|
| H 惩教署总部
CSD Headquarters | S 职员训练院
Staff Training Institute |
| 惩教设施
Correctional Facilities | |
| 1 罗湖惩教所
Lo Wu Correctional Institution | 16 歌连臣角惩教所
Cape Collinson Correctional Institution |
| 2 壁屋惩教所
Pik Uk Correctional Institution | 17 大潭峡惩教所
Tai Tam Gap Correctional Institution |
| 3 壁屋监狱
Pik Uk Prison | 18 赤柱监狱
Stanley Prison |
| 4 伊利沙伯医院羁留病房
Custodial ward at Queen Elizabeth Hospital | 19 东头惩教所
Tung Tau Correctional Institution |
| 5 百勤楼
Pelican House | 20 白沙湾惩教所
Pak Sha Wan Correctional Institution |
| 6 丰力楼
Phoenix House | 21 玛丽医院羁留病房
Custodial ward at Queen Mary Hospital |
| 7 励行更生中心
Lai Hang Rehabilitation Centre | 22 喜灵洲惩教所
Hei Ling Chau Correctional Institution |
| 8 荔枝角收押所
Lai Chi Kok Reception Centre | 23 喜灵洲戒毒所
Hei Ling Chau Addiction Treatment Centre |
| 9 励敬惩教所
Lai King Correctional Institution | 24 励顾惩教所
Nei Kwu Correctional Institution |
| 10 芝兰更生中心
Chi Lan Rehabilitation Centre | 25 励新惩教所
Lai Sun Correctional Institution |
| 11 大榄女惩教所
Tai Lam Centre for Women | 26 塘福惩教所
Tong Fuk Correctional Institution |
| 12 大榄惩教所
Tai Lam Correctional Institution | 27 石壁监狱
Shek Pik Prison |
| 13 紫荆楼
Bauhinia House | 28 沙咀惩教所
Sha Tsui Correctional Institution |
| 14 蕙兰更生中心
Wai Lan Rehabilitation Centre | 29 励志更生中心
Lai Chi Rehabilitation Centre |
| 15 小榄精神病治疗中心
Siu Lam Psychiatric Centre | |

香港惩教署2017年年报
Hong Kong Correctional Services Annual Review 2017

设计 Design: Nexify Limited

香港特别行政区政府惩教署2017
HKSARG Correctional Services Department 2017

兑换率

除另有说明外，本年报所用的「元」均指港元。自一九八三年十月十七日起，政府透过发行钞票机制，将港元与美元挂钩，以7.8港元固定汇率。

Exchange Rate

When dollars are quoted in this Review, they are, unless otherwise stated, Hong Kong dollars. Since October 17, 1983, the Hong Kong dollar has been linked to the US dollar, through an arrangement in the note-issue mechanism, at a fixed rate of HK\$7.8=US\$1.

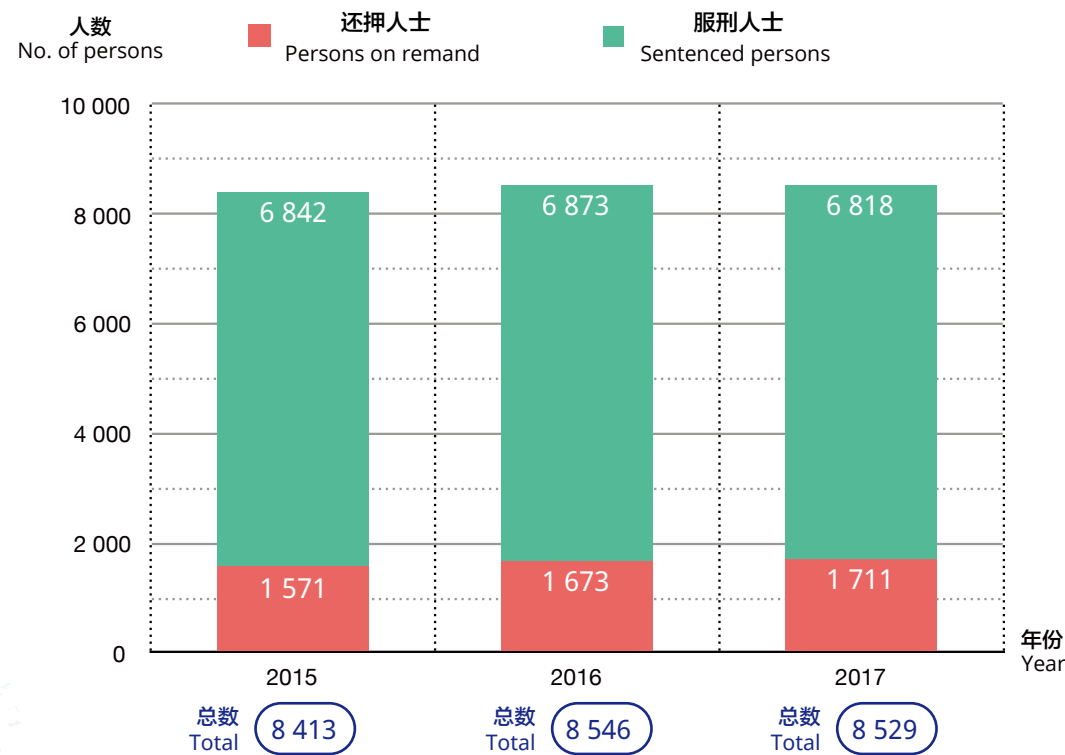
本年报所载资料经多方核证，力求准确无误。如有谬误遗漏，或因使用有关资料而引致任何损失、作为或不作为，或因依据有关资料而得出任何意见，香港特别行政区政府均无须负上任何责任。

Every effort has been made to ensure accuracy. The Government of the Hong Kong Special Administrative Region is not responsible for any inaccuracies, errors or omissions in this Review, or for any loss, action, or inaction arising from the use of, or for advice based on, any information therein.

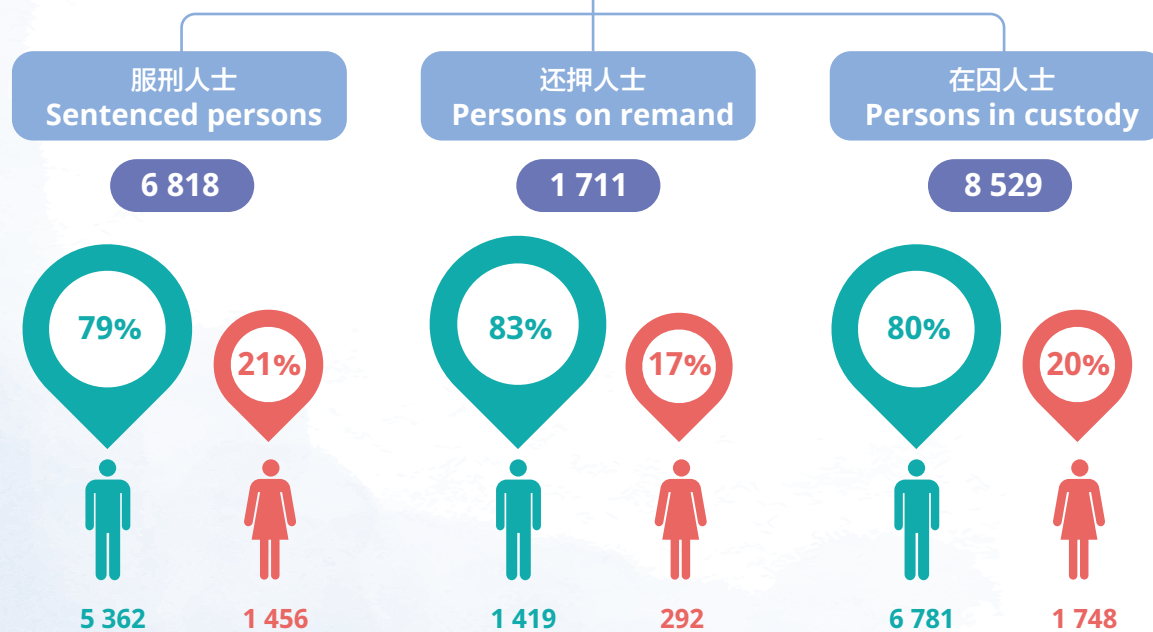
附录三 Appendix 3

按类别划分的平均每日在囚人士数目

Average Daily Number of Persons in Custody by Category



2017 按性别划分的人数 No. of persons by gender

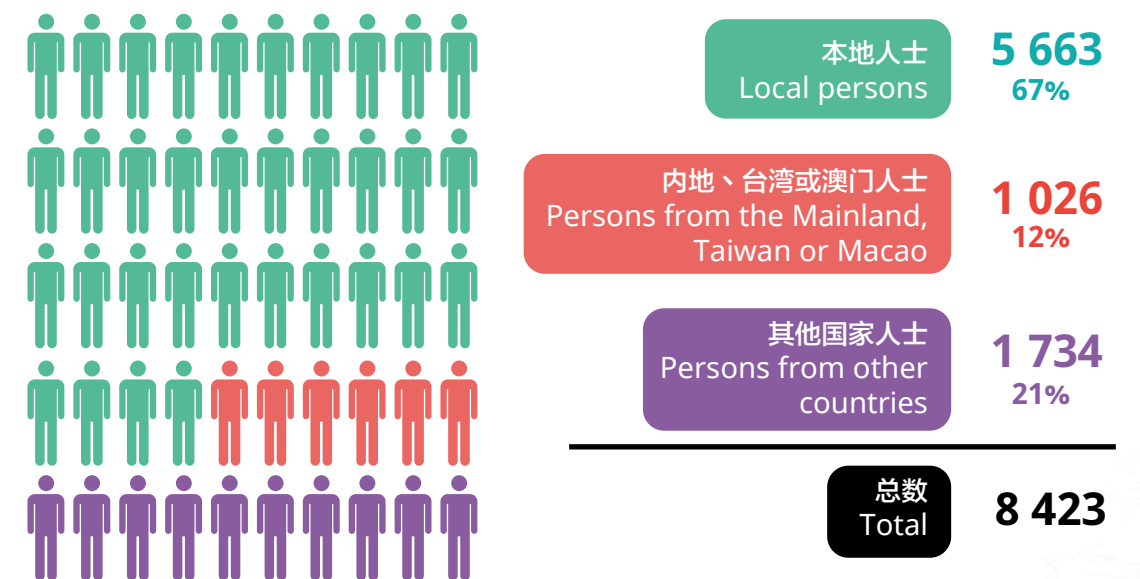


附录四 Appendix 4

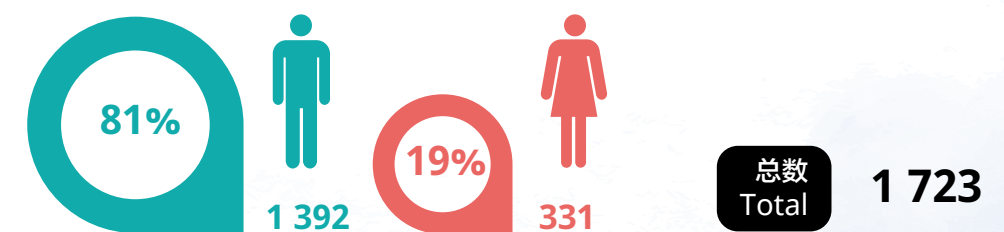
惩教署管理逾10 000名人士 (以2017年12月31日计算)

Over 10 000 Persons under Management of Correctional Services Department (As at 31.12.2017)

按本地 / 非本地人士划分的在囚人士数目 Number of Persons in Custody by Local/Non-local Persons



按性别划分释後监管人士的数目 Number of Persons under Supervision after Release by Gender



附录五 Appendix 5

各惩教院所囚人士数目 (以2017年12月31日计算)

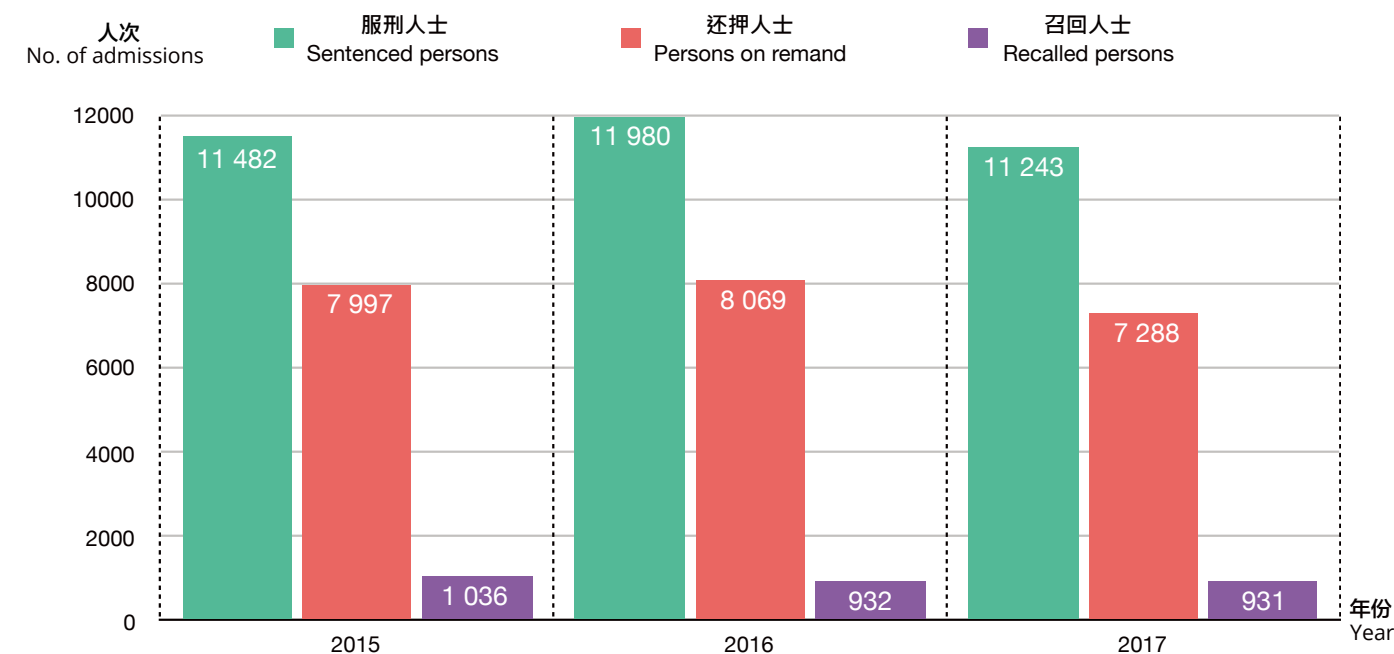
Statistics on Number of Persons in Custody by Institution (as at 31.12.2017)

院所 Institution		服刑人士 Sentenced persons	还押人士 Persons on remand	总数 Total
监狱 Prison				
喜灵洲惩教所	Hei Ling Chau Correctional Institution	386	-	386
荔枝角收押所	Lai Chi Kok Reception Centre	386	1 075	1 461
励敬惩教所	Lai King Correctional Institution	25	11	36
罗湖惩教所	Lo Wu Correctional Institution	1 212	52	1 264
白沙湾惩教所	Pak Sha Wan Correctional Institution	301	-	301
壁屋惩教所	Pik Uk Correctional Institution	93	86	179
壁屋监狱	Pik Uk Prison	383	-	383
石壁监狱	Shek Pik Prison	417	-	417
赤柱监狱	Stanley Prison	1 230	227	1 457
大榄女惩教所	Tai Lam Centre for Women	97	197	294
大榄惩教所	Tai Lam Correctional Institution	439	-	439
大潭峡惩教所	Tai Tam Gap Correctional Institution	40	-	40
塘福惩教所	Tong Fuk Correctional Institution	659	-	659
东头惩教所	Tung Tau Correctional Institution	309	-	309
戒毒所 Drug Addiction Treatment Centre				
喜灵洲戒毒所	Hei Ling Chau Addiction Treatment Centre	284	-	284
励新惩教所	Lai Sun Correctional Institution	74	-	74
励顾惩教所	Nei Kwu Correctional Institution	102	-	102
教导所 Training Centre				
歌连臣角惩教所	Cape Collinson Correctional Institution	62	-	62
劳教中心 Detention Centre				
沙咀惩教所	Sha Tsui Correctional Institution	26	-	26
更生中心 Rehabilitation Centre				
励志更生中心	Lai Chi Rehabilitation Centre	10	-	10
励行更生中心	Lai Hang Rehabilitation Centre	13	-	13
芝兰更生中心	Chi Lan Rehabilitation Centre	5	-	5
蕙兰更生中心	Wai Lan Rehabilitation Centre	3	-	3
精神病治疗中心				
小榄精神病治疗中心	Siu Lam Psychiatric Centre	172	47	219
总数		Total: 6 728	1 695	8 423

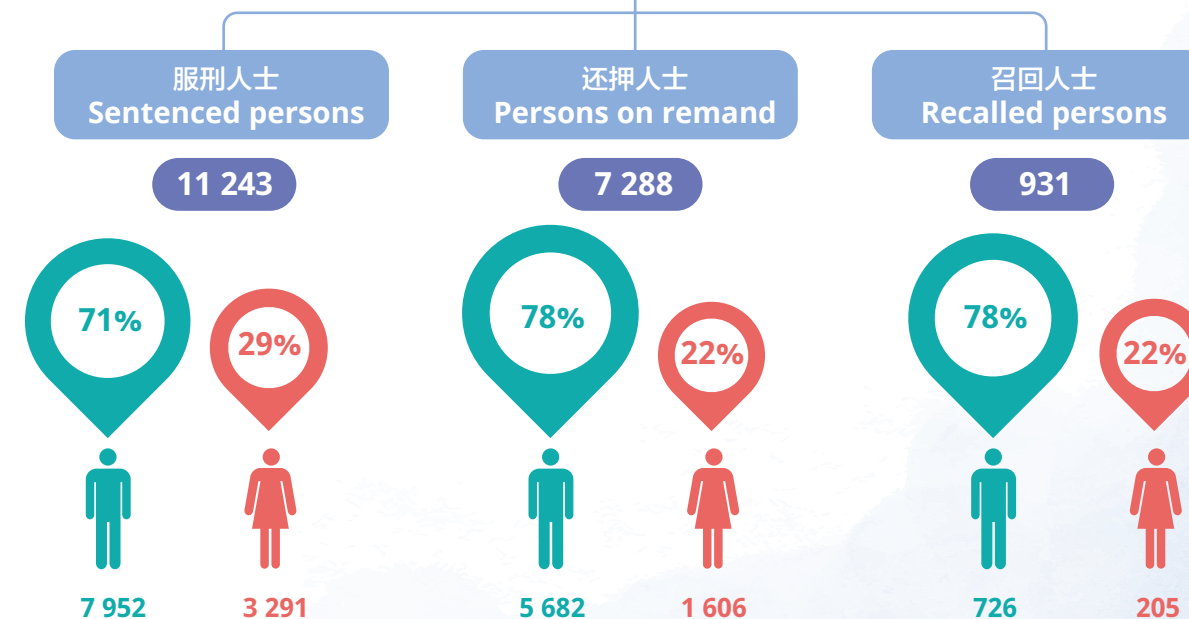
附录六 Appendix 6

按类别划分的惩教院所收纳人次

Admission of Persons in Custody to Correctional Institutions by Category



2017 按性别划分的人次 No. of admissions by gender



附录七 Appendix 7

按罪行类别划分被收纳入
惩教院所的服刑人次

Admission of Sentenced Persons to
Correctional Institutions by Type of Offence

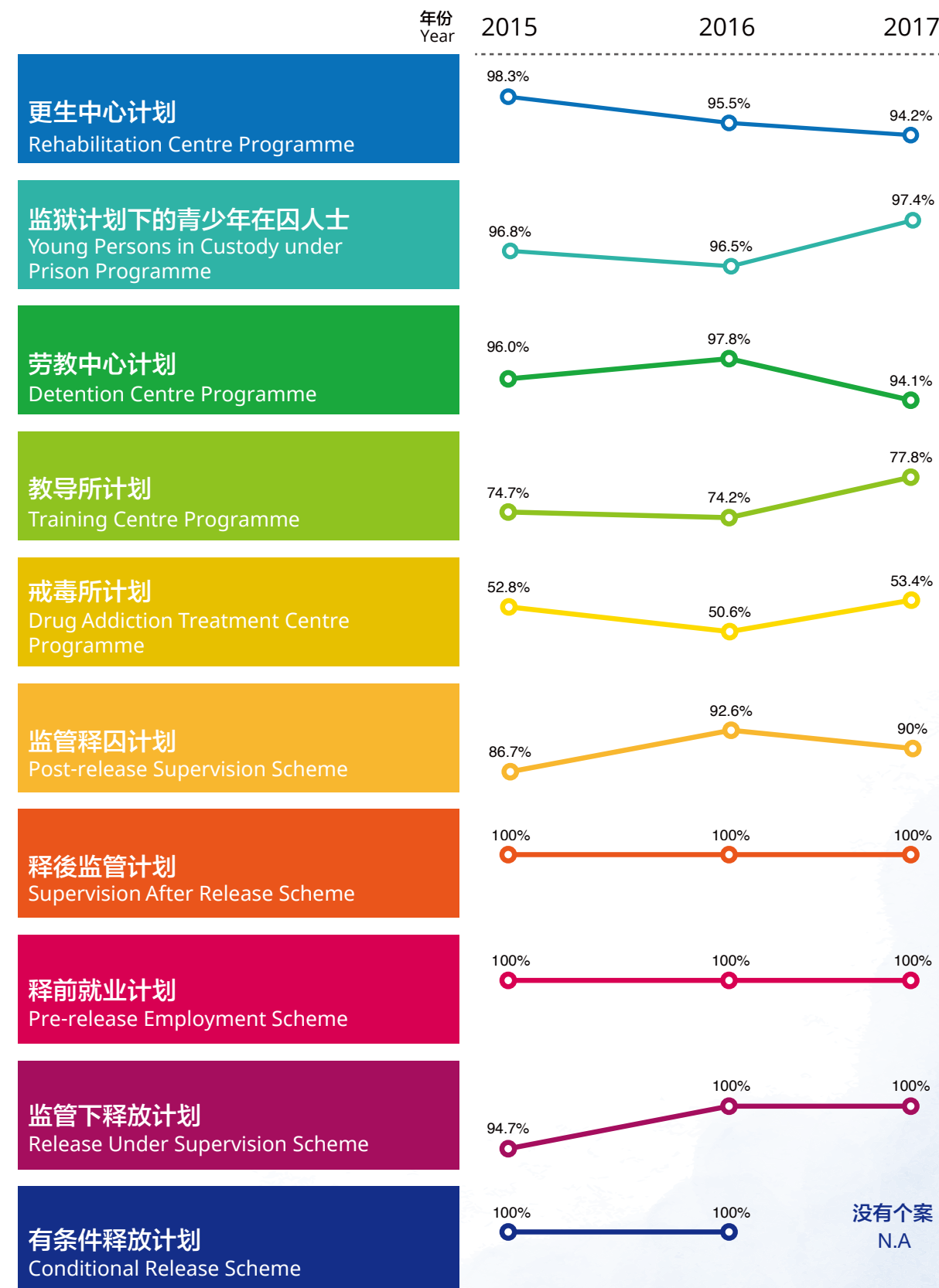


- 毒品罪行 (例如: 管有危险药物及贩运危险药物)
Drug offences (e.g. possession of dangerous drugs and trafficking in dangerous drugs)
- 侵害财产 (例如: 盗窃、爆窃、诈骗及抢劫)
Against Property (e.g. theft, burglary, deception and robbery)
- 违反本地法律 (例如: 违反逗留条件、曾有未完税货品、违反进出口规例及非法在香港居留)
Against Local Laws (e.g. breach of condition of stay, possession of dutiable commodities, breach of import/export regulations and remaining in HK unlawfully)
- 其他

附录八 Appendix 8

在监管期内重新融入社会
计划的成功率

Success Rates of Reintegration
Programmes within the Supervision Period

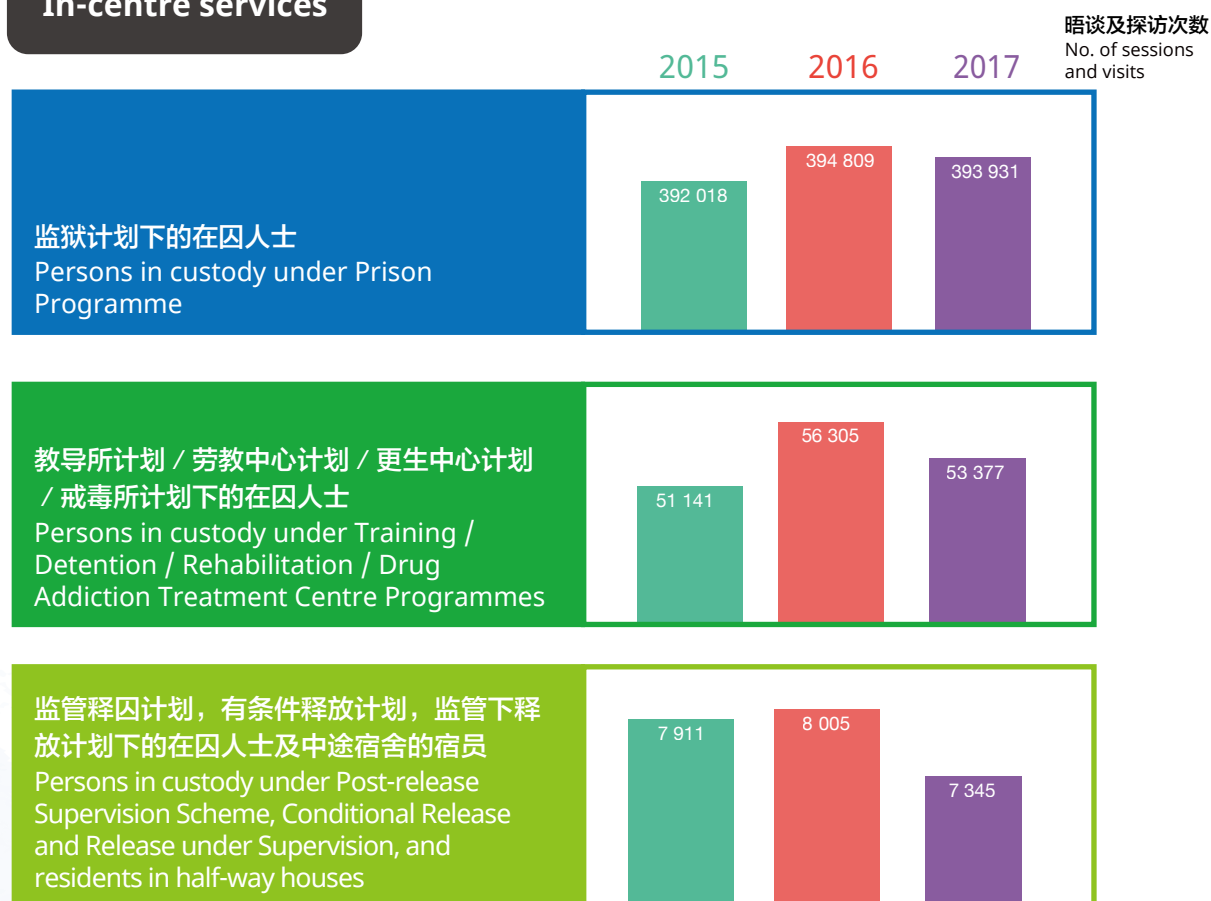


附录九 Appendix 9

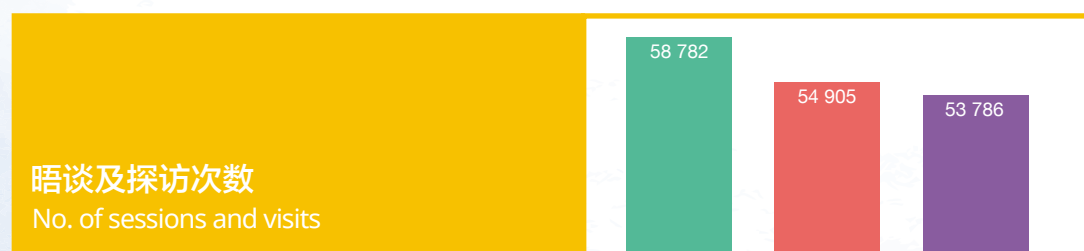
心理辅导及福利服务 晤谈及探访次数

Number of Psychological Counselling and Welfare Services Sessions and Visits

院所内的服务 In-centre services



院所外的服务 Out-centre services



附录十 Appendix 10

二零一七年获嘉奖人员名单

Commendations to Staff in 2017

银紫荆星章 Silver Bauhinia Star (SBS)

邱子昭 YAU Chi-chiu, CSDSM

香港惩教事务卓越奖章 Hong Kong Correctional Services Medal for Distinguished Service (CSDSM)

罗益民 LAW Yick-man

香港惩教事务荣誉奖章 Hong Kong Correctional Services Medal for Meritorious Service (CSMSM)

李国宝 LEE Kwok-po
林耀礼 LAM Yiu-lai
陈文忠 CHAN Man-chung, Simon
梁伟江 LEUNG Wai-kong
刘美玲 LAU Mei-ling

公务员事务局局长嘉奖 Secretary for the Civil Service's Commendation

王广安 WONG Kwong-on
陈文强 CHAN Man-keung, Gary
曾志贤 TSANG Chi-yin
黄名中 WONG Ming-chung
卢婉仪 LO Yuen-yi

署长嘉奖 Commissioner's Commendation

许佐恒 HUI Cho-hang
杨燕恩 YEUNG Yin-yan
邓秉明 TANG Ping-ming
吕耀 LUI Yiu
郑育良 CHENG Yuk-leung
蔡栢轩 CHOI Nam-hin
曾伟贤 TSANG Wai-yin
伍永鸿 NG Wing-hung

助理署长嘉奖 Assistant Commissioner's Commendation

吴超觉 NG Chiu-kok
何国文 HO Kwok-man
洪嘉诺 HUNG Ka-lok
梁浩基 LEUNG Ho-kei
黄栢颖 WONG Pak-wing
容宇 YUNG Yu
王锦齐 WONG Kam-chai
邱劲松 YAU King-chung
祁梓豪 KI Tsz-ho
刘明辉 LAU Ming-fai
陈柏文 CHAN Pak-man
梁燕玲 LEUNG Yin-ling
潘竞雄 POON King-hung
许钊鸿 HUI Chiu-hung
刘嘉屏 LAU Ka-ping
余泽堃 YU Chak-kwan
袁俊杰 YUEN Chun-kit
郑有俊 CHENG Yau-chun
郑玉龙 CHENG Yuk-lung
杨显宗 YEUNG Hin-chung
魏纯洁 NGAI Shun-kit
何振东 HO Chun-tung

附录十一

Appendix 11

二零一五至二零一七年投诉调查组接收由在囚人士、公众人士及职员提出的个案数目^①

Number of Cases Received by Complaints Investigation Unit (CIU) from Persons in Custody, the Public and Staff from 2015 to 2017^①

		年份 Year	2015	2016	2017
A	由投诉调查组展开调查的个案	Cases entailing CIU investigation	113	124	123
	-使用非必要武力	-Use of unnecessary force	15	16	22
	-行为不当	-Misconduct of staff	69	48	50
	-疏忽职守	-Negligence of duty	9	15	15
	-滥用权力	-Abuse of authority	14	28	26
	-纪律行动不公正	-Injustice in disciplinary action	5	15	8
	-不满院所的政策或程序	-Institutional policy / procedure	1	1	2
	-其他	-Others	0	1	0
B	由投诉调查组监察院所处理的个案 ^②	Cases handled by institutions under CIU monitoring ^②	63	49	55
C	由投诉调查组以简易程序处理的重复投诉个案 ^③	Repeated complaints handled by CIU in a simple administrative way ^③	72	0	0
D	由投诉调查组处理的求助/查询个案 ^④	Cases of requests / enquiries handled by CIU ^④	104	186	161
	总数	Total (A+B+C+D)	352	359	339

E	由惩教署投诉委员会审核通过投诉调查组的调查结果	Findings of CIU investigation endorsed by Correctional Services Department Complaints Committee (CSDCC)	121	118	95
	- 证明属实	-Substantiated	1	2	3
	- 证实另有别情	-Substantiated other than reported	0	1	0
	- 无法完全证实	-Not fully substantiated	0	0	0
	- 虚假	-False	17	9	4
	- 虚假及恶意	-False & malicious	0	0	0
	- 并无过错	-Faultless	9	13	11
	- 未能证实	-Not proven	0	1	1
	- 无法证实	-Unsubstantiated	67	73	52
	- 终止调查	-Curtailed	12	14	14
	- 无从追查	-Not pursuable	14	5	9
	- 撤回	-Withdrawn	1	0	1
F	经惩教署投诉委员会覆核的个案	Cases re-examined by CSDCC	2	4	5
G	惩教署署长处理的上诉个案	Cases of appeal handled by Commissioner of Correctional Services (CCS)	0	0	3
H	惩教署投诉上诉委员会处理的上诉个案 ^⑤	Cases of appeal handled by Correctional Services Department Complaints Appeal Board (CSDCAB) ^⑤	-	0	9
I	惩教署投诉委员会审核通过的服务改善建议	Recommendation for service improvement endorsed by CSDCC	30	31	23

“-” 表示「不适用」
“-” denotes "Not applicable"

- ^① 自2017年起，本年报所刊登的投诉调查组接收个案，已包括由本署职员提出的个案，并同时反映於2015年及2016年的统计数字内。
Since 2017, the number of cases received by CIU as published in this Annual Review included cases lodged by CSD staff, and such inclusion as well reflected in the statistics of 2015 and 2016.
- ^② 投诉个案属於性质轻微及与院所运作有关，例如院所环境、膳食及探访安排等。
The cases were complaints of minor and operational nature such as institutional environment, diet and visit arrangement.
- ^③ 重复投诉指由同一投诉人重复提出相类同的投诉。为避免该投诉人继续滥用本署的投诉机制及善用处理投诉的资源，投诉调查组循简易的行政程序处理有关个案。
Those complaints were grievances repeatedly raised by the same complainant. In order to prevent the complainant from further abusing the complaints handling mechanism of the Department, CIU handled those cases in a simple administrative way.
- ^④ 个案包括由电邮、电话热线或亲临投诉调查组提出，或透过1823政府电话中心转介。
The cases included those raised via CIU email, phone calls, visiting CIU or referred by 1823 Call Centre.
- ^⑤ 惩教署投诉上诉委员会於二零一六年八月一日正式成立，取代原有由惩教署投诉委员会担任的覆检功能和由惩教署署长处理上诉个案的职能。
CSDCAB was established w.e.f. August 1, 2016, replacing the former appeal handling mechanism, i.e. re-examination by CSDCC and appeal to CCS.

